

Quick look echocardiografie

Ibtihal Al Amri
Cardioloog i.o.



Disclosures

(potentiële) Belangenverstrengeling	Geen

Inhoud

- **Introductie**
- **Doel**
- **Methode**
- **Casus**
- **Conclusie**



Introductie

Echografie in de acute setting

- **Steeds grotere rol**
- **Weinig invasieve methode**
- **Snelle informatievoorziening**



Doel

**Snel levensbedreigende diagnoses
aantonen/ uitsluiten**



Methode

- **Verschillende protocollen**
 - **RACE, FAST, FATE, FoCUS, etc.**
- **Systematische benadering**
- **Beeldvorming gericht op vraagstelling**

Casus



- ♀ , 30 jaar
- Blanco VG
- Acute POB
- Kortademig

Casus

A: Vrij

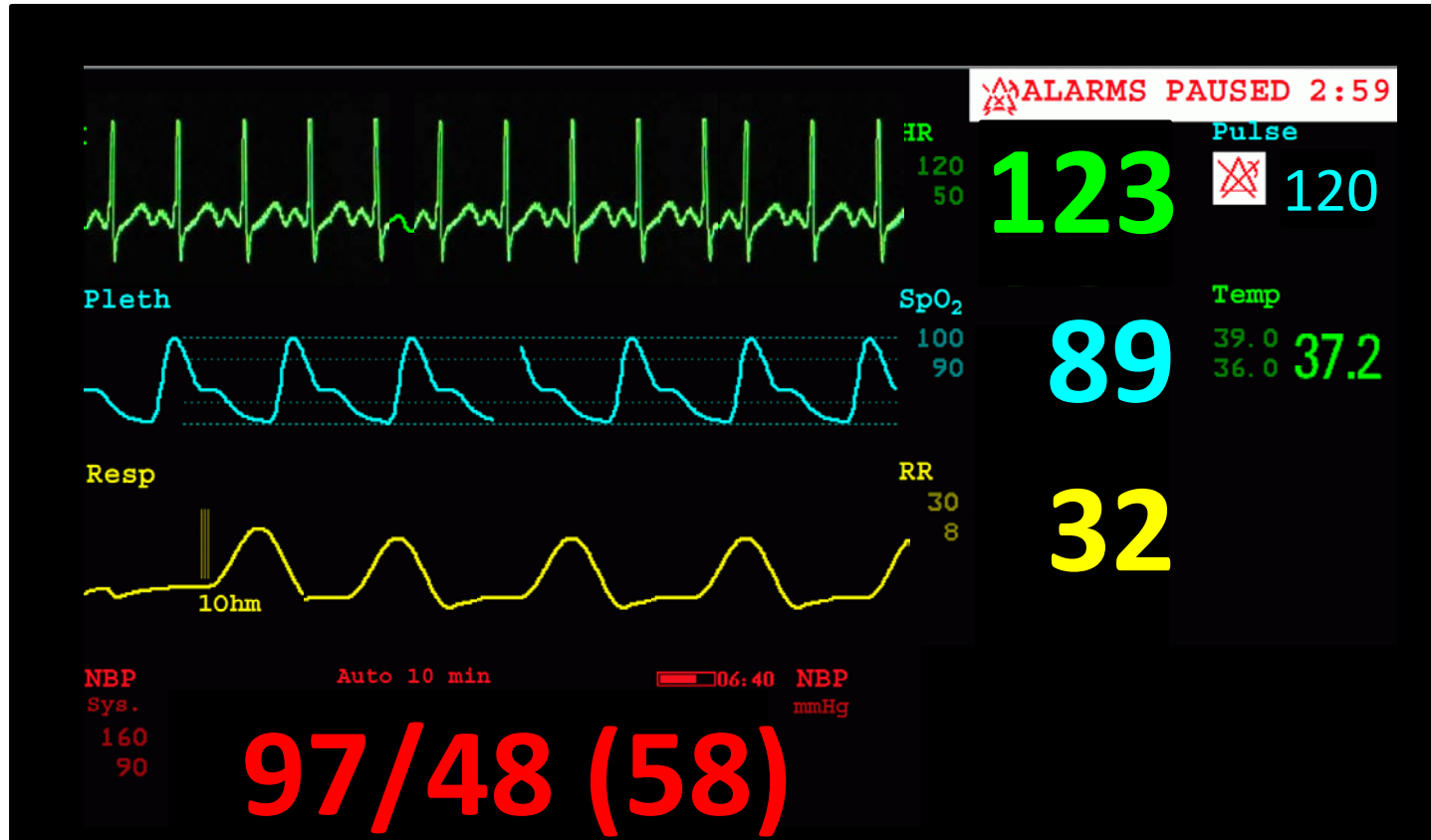
B: Symm thoraxexcursies, VAG, bijg -

C: CRT 5s, koude acra, zwakke pols, S1S2

D: EMV maximaal, lateralisatie -, gluc 6

E: Gemarmerde huid

Casus



- ECG: sinustach
- X-thorax: n

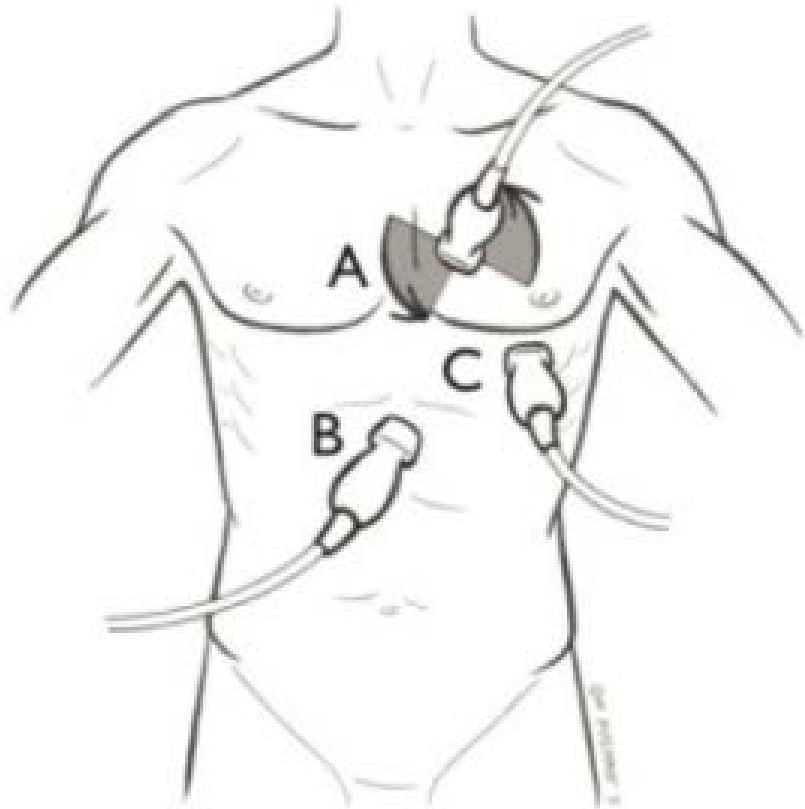
Shock

Quick look echocardiogram

- **Pericard**
- **LV**
- **RV**
- **Volume status**



Quick look echocardiogram

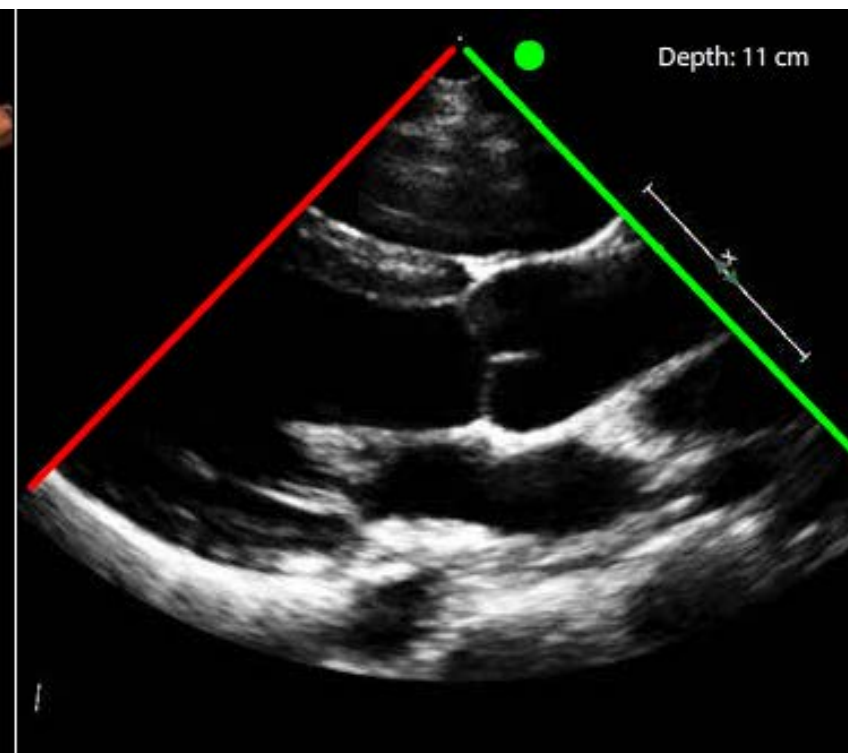
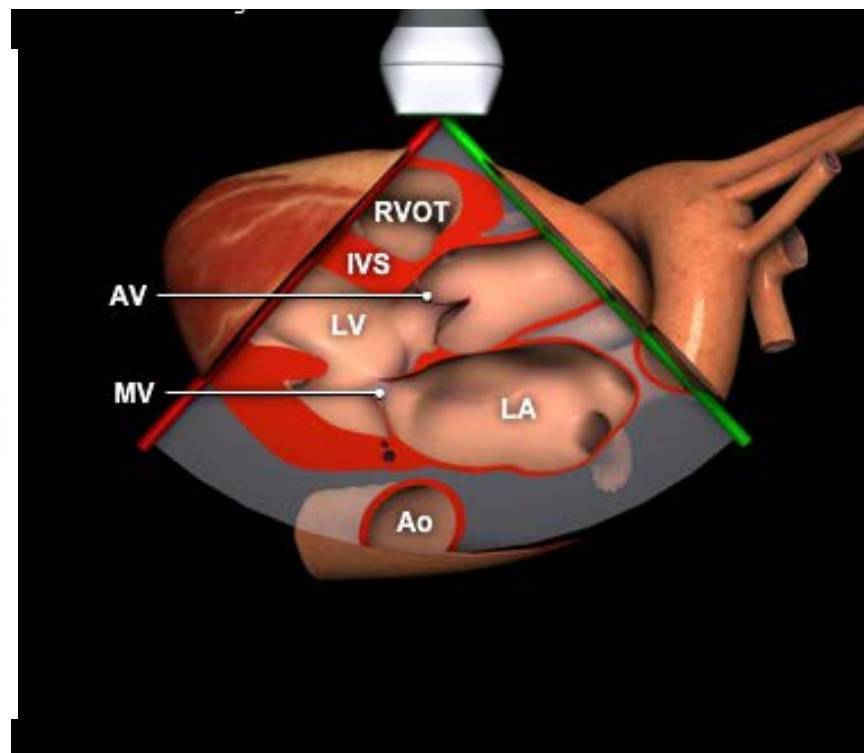
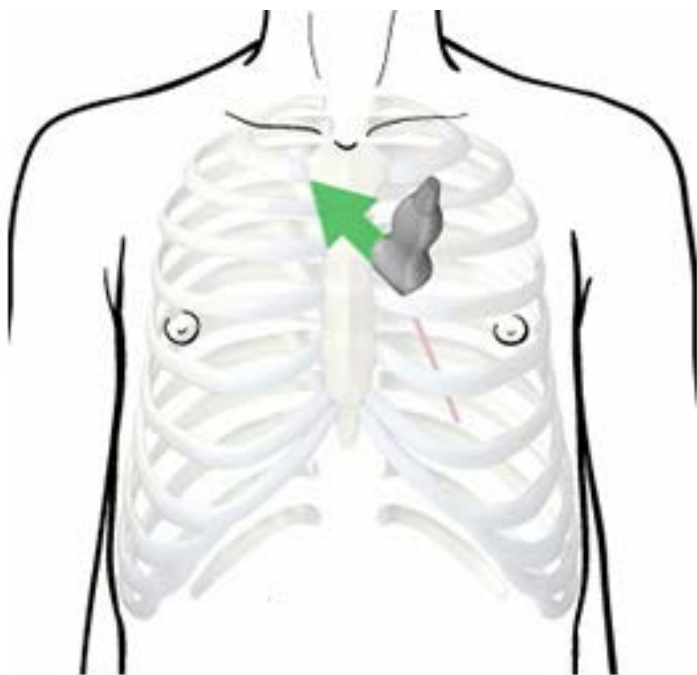


A: Parasternaal

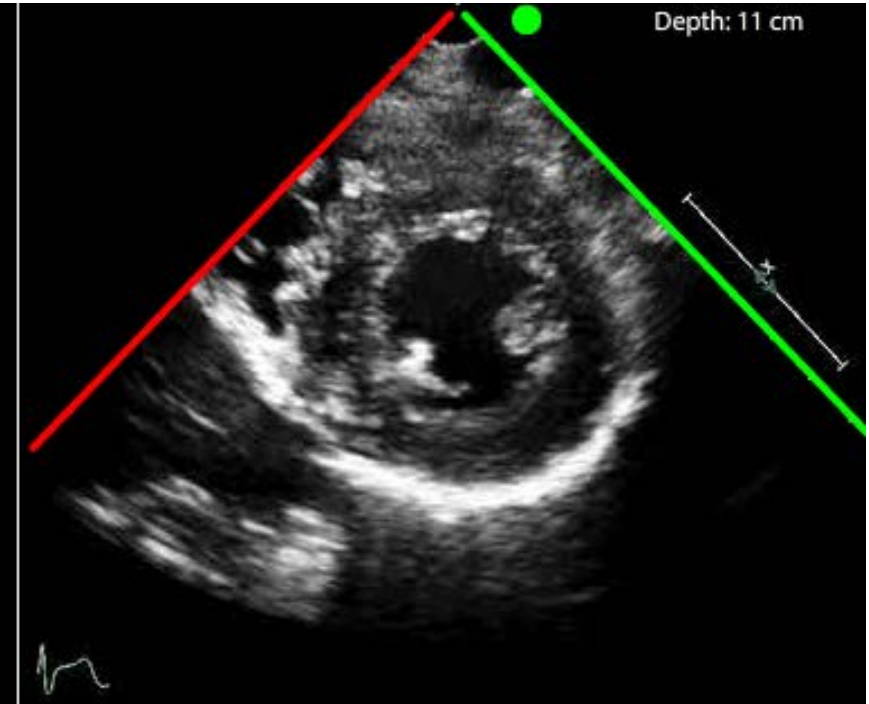
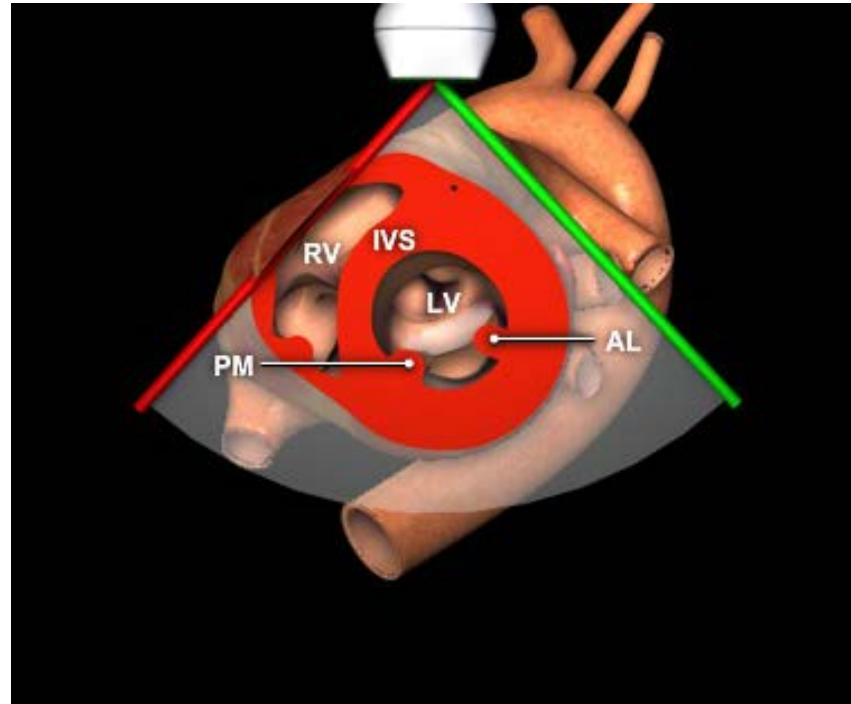
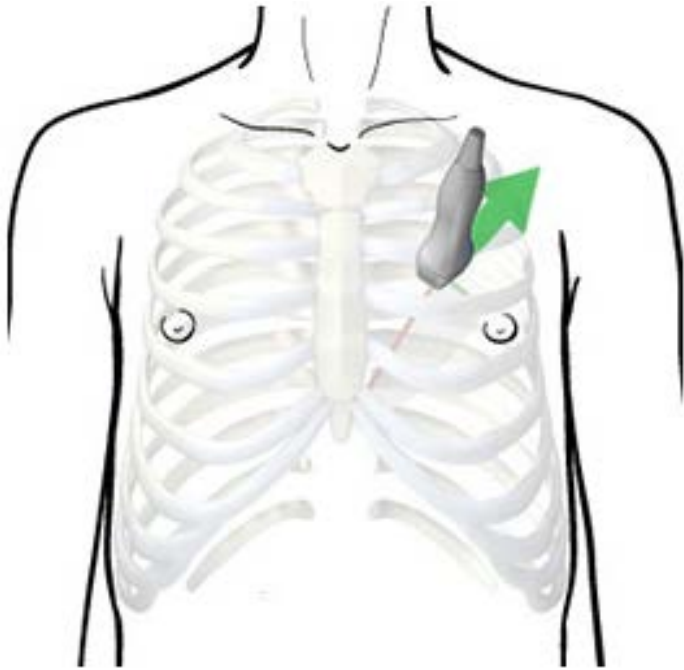
B: Subcostaal

C: Apicaal

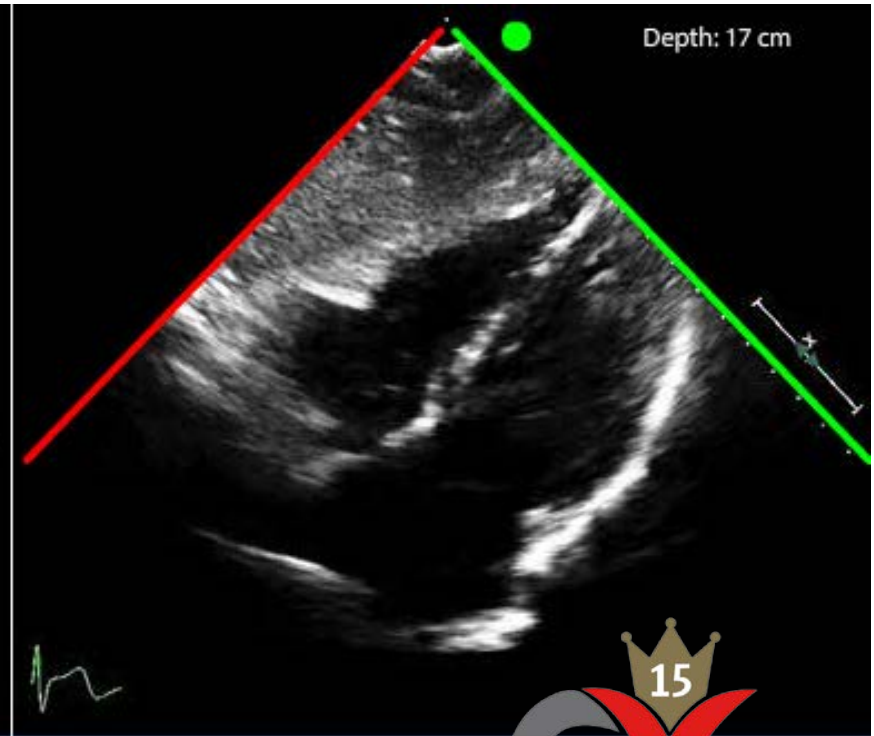
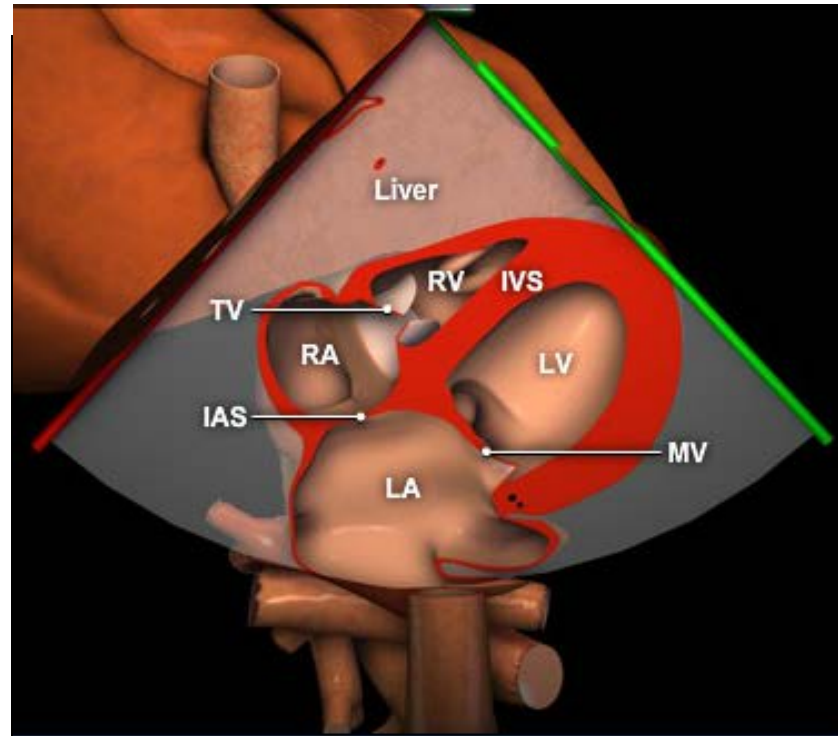
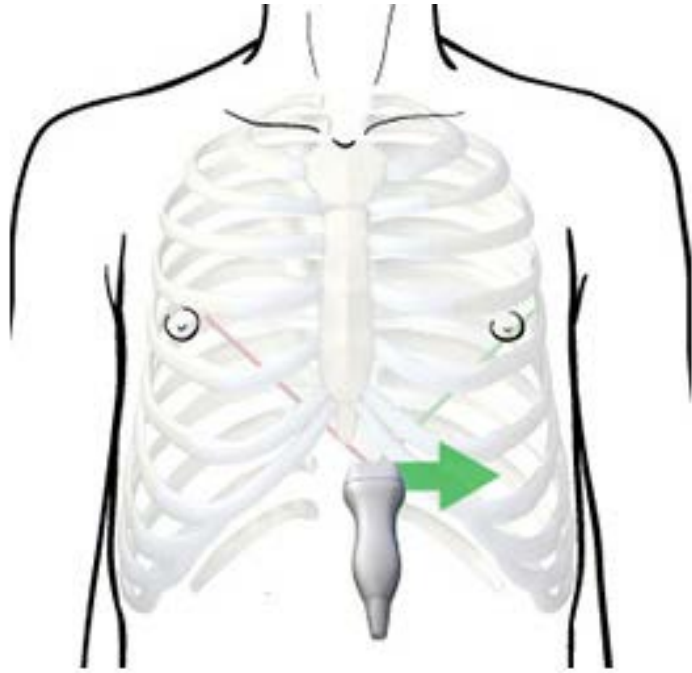
Parasternaal lange as



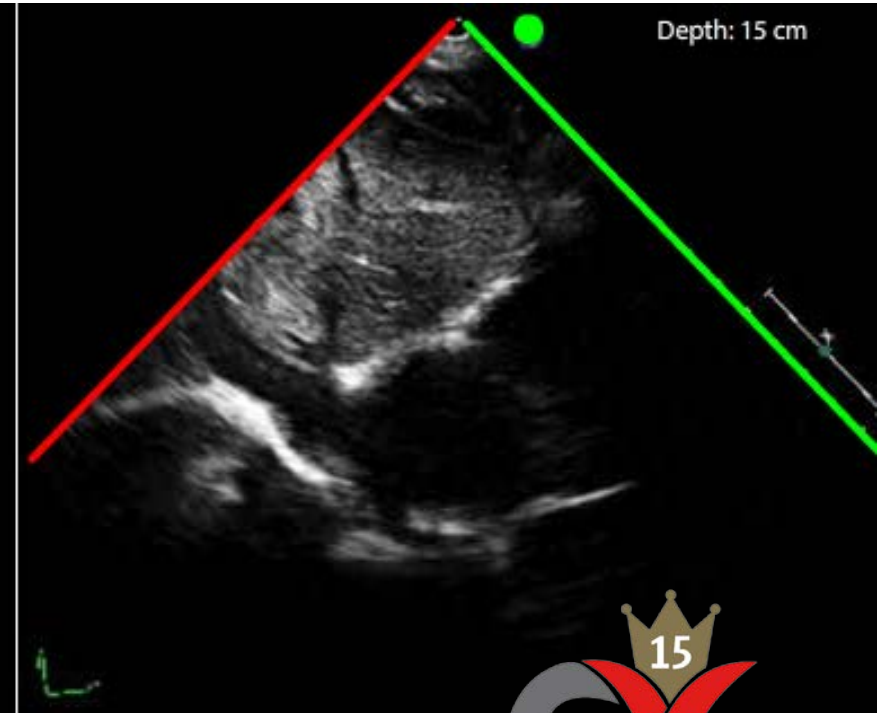
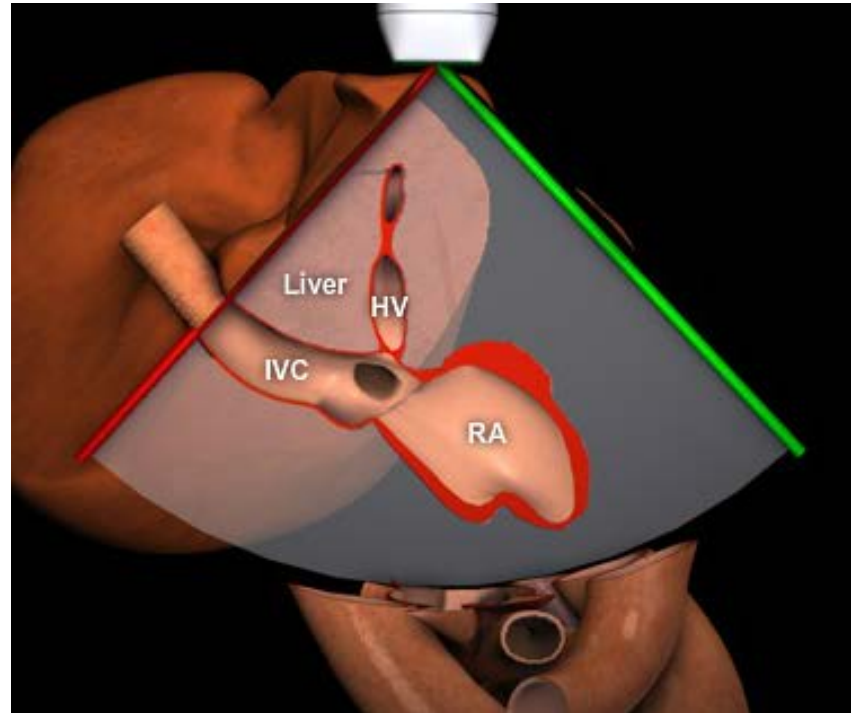
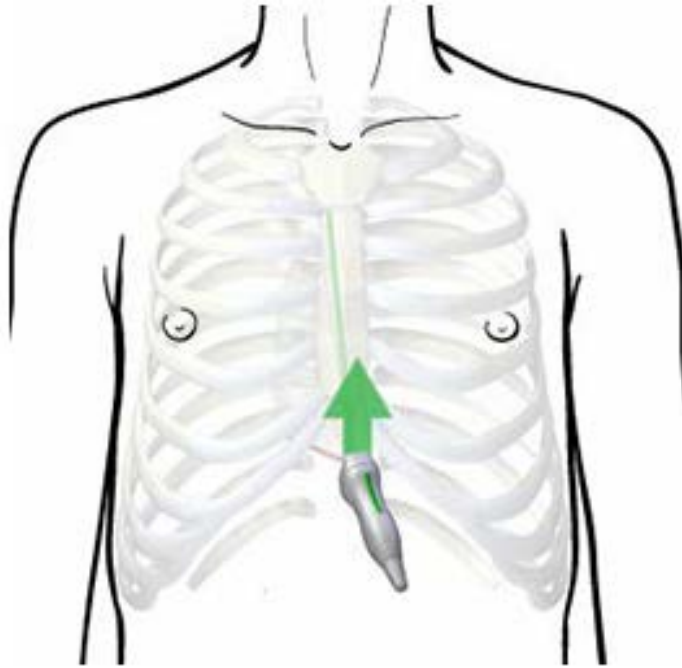
Parasternaal korte as



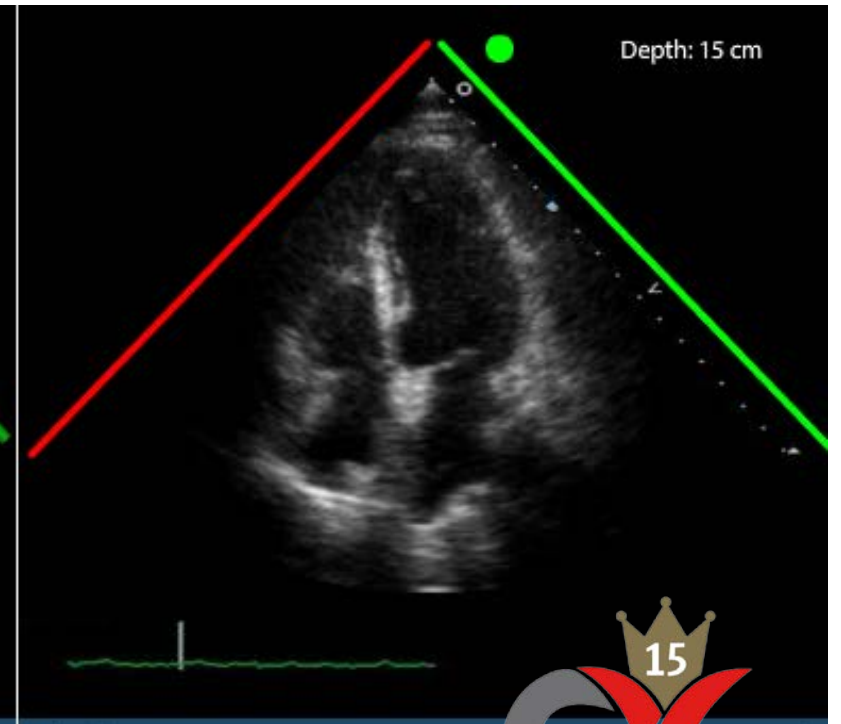
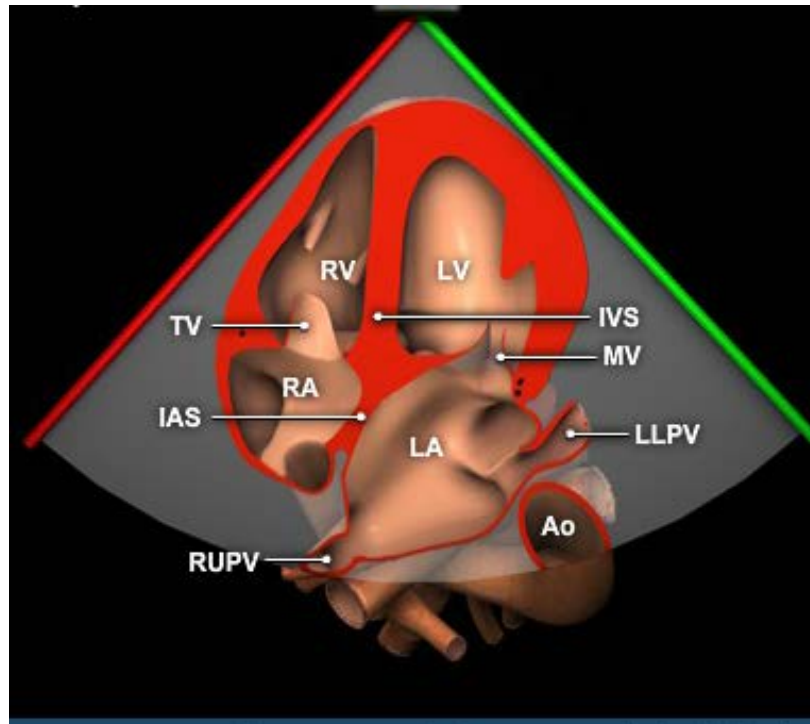
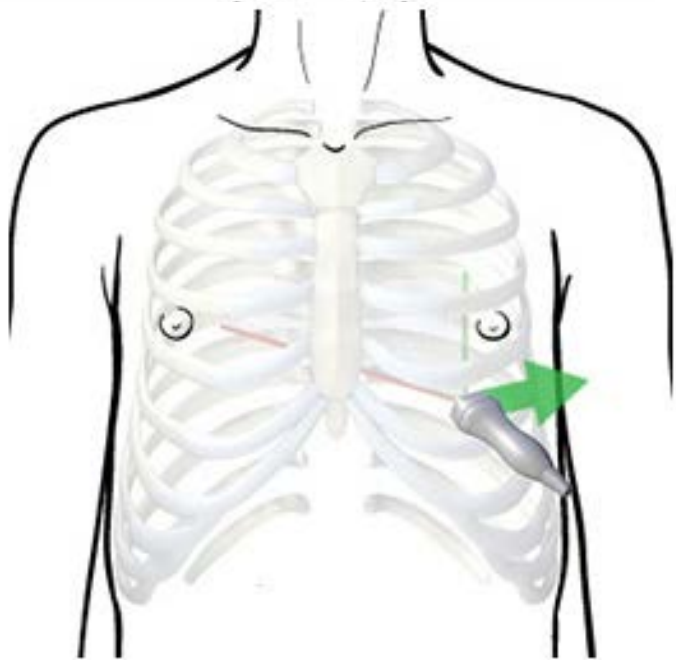
Subcostaal 4 kamer



Subcostaal vena cava



Apicaal 4 kamer



Casus



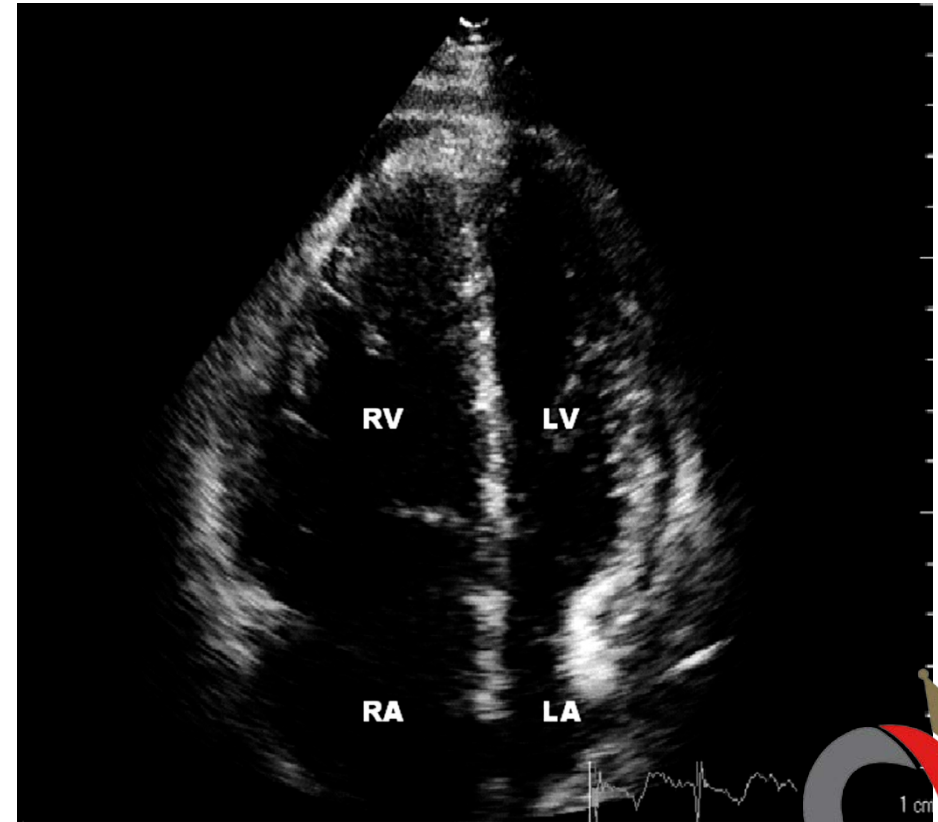
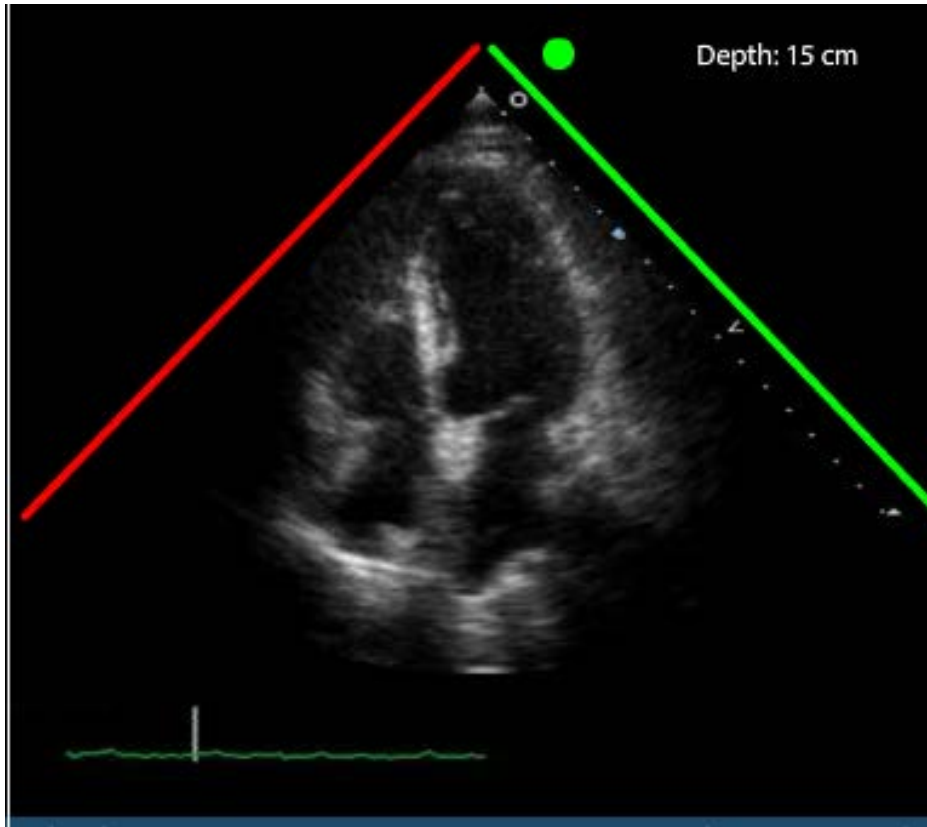
- ♀ , 30 jaar
- Blanco VG
- Acute POB
- Kortademig

Casus



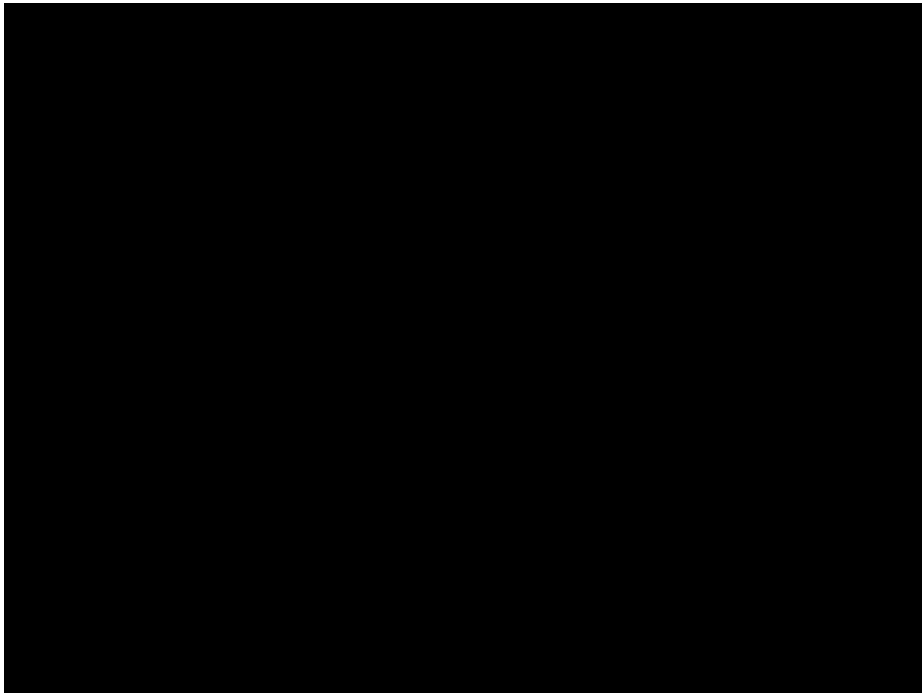
- **Longembolie?**
- **Tamponnade?**
- **Dissectie?**
- **Hartinfarct?**
- **Hartfalen?**

Longembolie

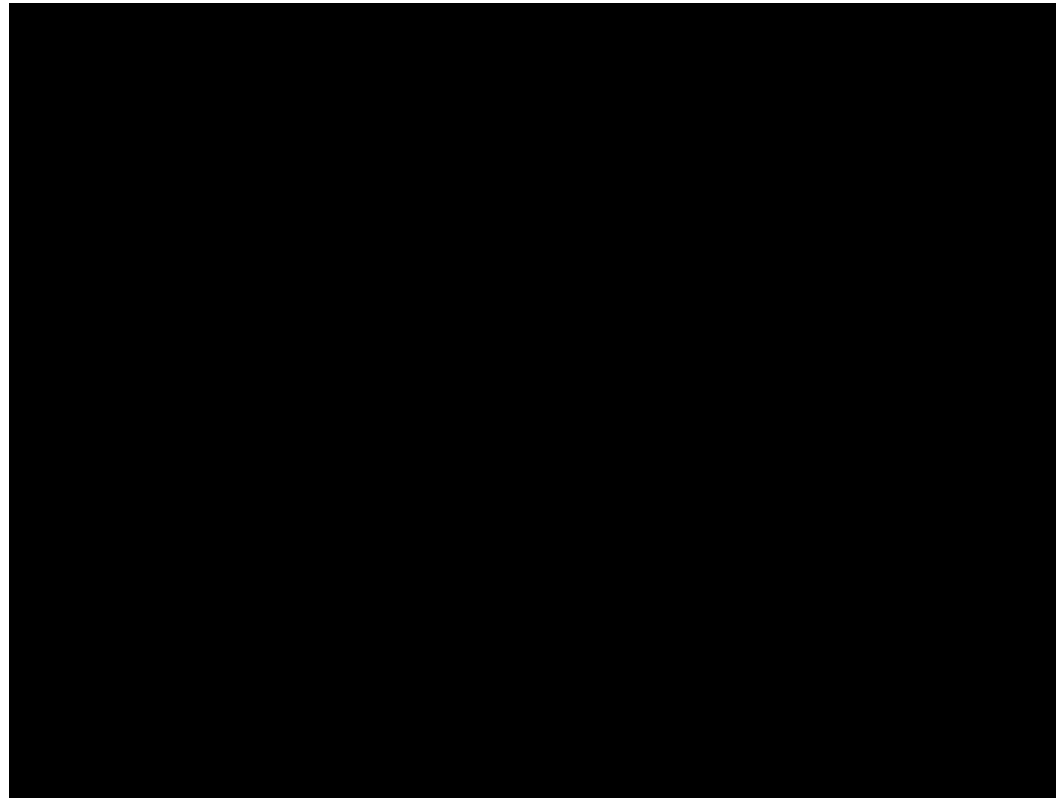


Tamponnade

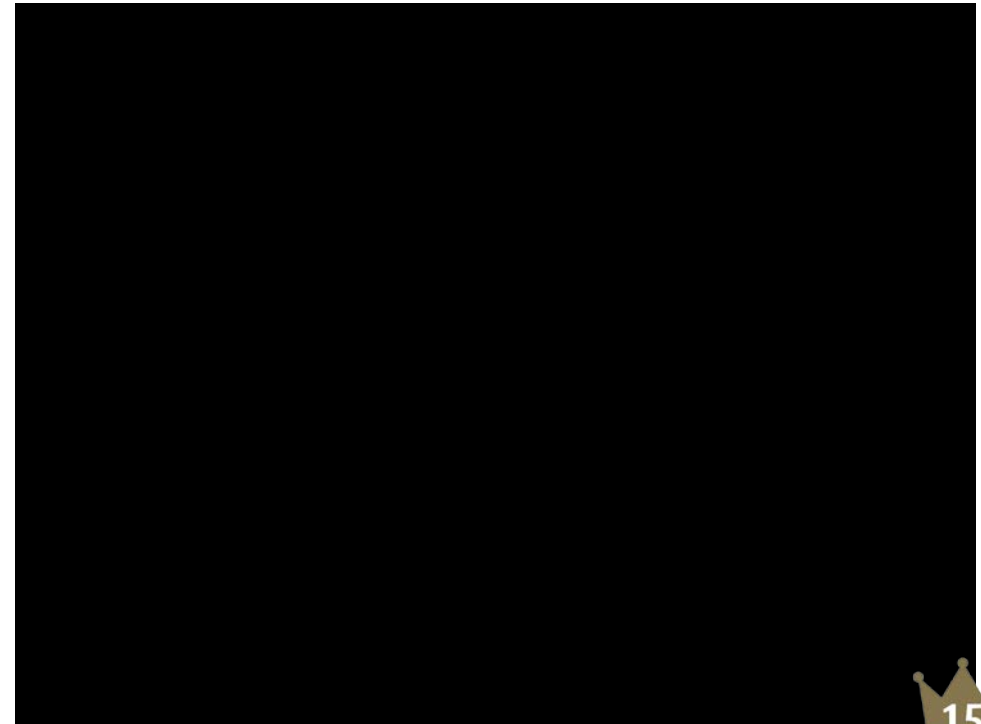
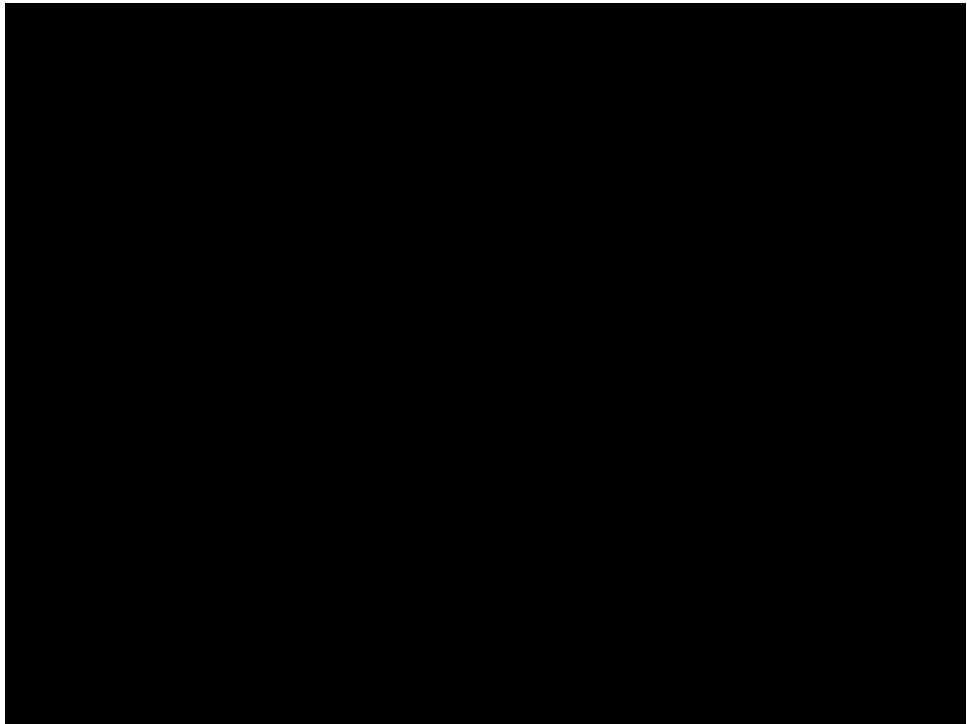
- PE
- Diastolische collaps RV
- Wijde VCI, collaps -



Dissectie



Hartinfarct/ hartfalen



Conclusie

- **Snel**
- **Niet invasief**
- **Veel informatie**
- **Gericht op vraagstelling!**
- **Suboptimale beeldkwaliteit**

Quick look echocardiografie

Ibtihal Al Amri
Cardioloog i.o.

